



FLANTECH<sup>®</sup>

# Metazyme<sup>®</sup>

## Natural Plant Enzyme Powder

### FOOD

Carbohydrate  
Protein  
Fats  
Fibers  
Sugars



### DIGESTIVE ENZYMES



### BREAK DOWN

into smallest components for absorption of vitamins, minerals & other nutrients

**WHY**  
*Metazyme<sup>™</sup>*

### 7 ENZYMES

#### **Protease**

- Breaks down protein

#### **Amylase**

- Breaks down starches, carbohydrates and some sugars

#### **Lipase**

- Breaks down fats

#### **Cellulase**

- Breaks down soluble dietary fibers

#### **Sucrase**

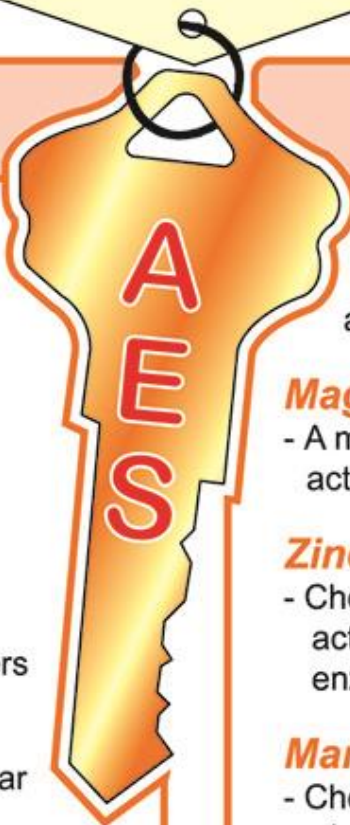
- Breaks down cane and beet sugar

#### **Maltase**

- Breaks down malt or grain sugar

#### **Lactase**

- Breaks down milk sugar



### >77 Organic Plant Source Minerals

#### **Calcium Ascorbate**

- A mineral salt of vitamin C, activates protease

#### **Magnesium Citrate**

- A magnesium rich salt of citric acid, activates amylase

#### **Zinc Gluconate**

- Chelated Zinc for better absorption, activates lipase & other metabolic enzymes

#### **Manganese Gluconate**

- Chelated Manganese concerning absorption, activates cellulase

#### **Trace Mineral Mix**

- Obtained from plant source to ensure they are photosynthetic & absorbable

#### **Kelp**

- Rich source of vitamins especially B vitamins, minerals and trace elements

*the spark of life*

## Systemic Enzymes with Patented AES Mineral Blend (Assimilating Enhancing System)

**Metazyme**® boasts the patented **AES Delivery System** which is a unique blend of enzymes combined with the specific action-boosting minerals that activate each particular enzyme. This delivery system enhances the absorption of nutrients by **12% to 48%**. It also enhances the assimilation capabilities of your body by insuring that the nutrients ingested are broken down **100%**.

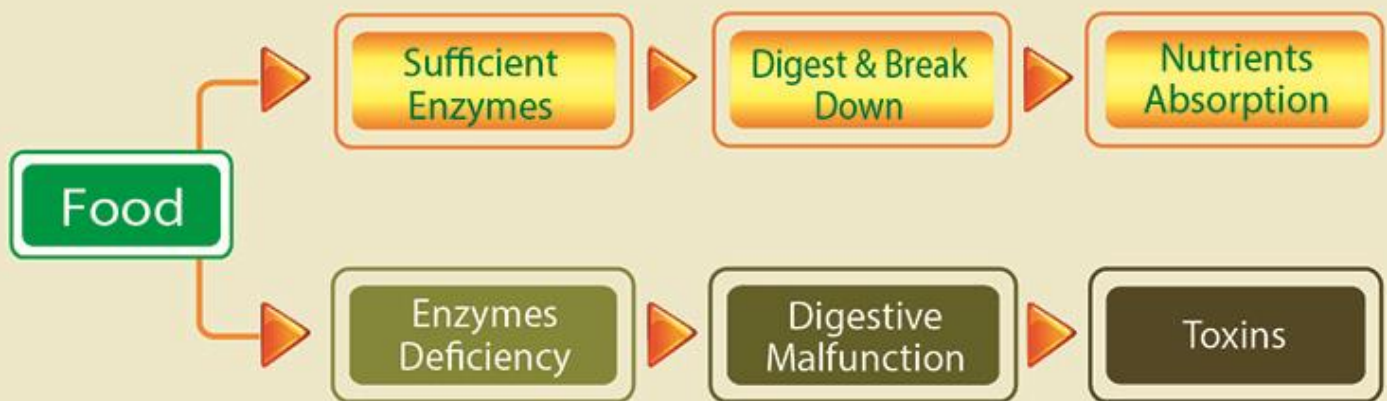


## 100% Aspergillus Derived Enzymes (Broad Active pH Range)



This formula contains an enzyme blend in carefully chosen quantity to assist in digestions. While most enzymes preparations are derived from animal, plant or microbial sources, **Metazyme**® contains enzymes derived from 2 types of 100% Aspergillus. By using varying Aspergillus strands, **Metazyme**® is capable of remaining active in pH levels as acidic as 1.7 and as alkaline as pH 11, making sure that our body is never lacking in the essential enzymes for biochemical reactions.

## Nutrients or Toxins?

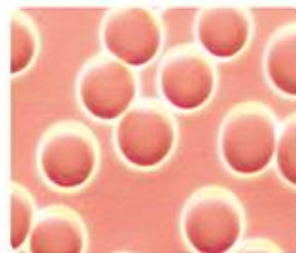


Please contact:

**Flantech Asia Sdn Bhd**  
(568711-K) (A.J.L 931410)

30, Lorong P.S. 1, Bandar Perda,  
14000 Bukit Mertajam, Penang, Malaysia.

[www.flantechasia.com](http://www.flantechasia.com)



**Healthy blood cells -**  
Round, uniform in shape with  
unrestricted flowing movement



Code: 21064EVersion 2018